

England and Wales house price trends from Acadameetrics

- **House prices in March fell by 0.9%**

The average price of all property transactions completed in England & Wales in March 2009 was 0.9% lower than in February. This is the thirteenth consecutive monthly price fall.

- **Prices are now 13.4% lower than a year ago**

On an annual basis, the average price of all completed transactions in England and Wales is now 13.4% lower than a year ago. All ten regions in England and Wales are showing prices falling on an **annual** basis and the same is true on a **monthly** basis apart from Wales (0%).

- **London has fallen into line**

London's prices have been falling rapidly in recent months and the annual fall in February is only exceeded by the South East.

Dr Peter Williams Chairman of Acadameetrics said

“The average house price is now £200,086, back to the March 2006 level, 3 years ago.

“More positively, the FTHPI index suggests that the rate at which prices are falling is slowing. In this downturn, November 2008 recorded the highest monthly drop at -2.2%. Since then, the rate of decline has eased almost every month, with March 2009 at -0.9%. This is also true on a 3 month rolling basis, down from -1.9% to -0.9%.”

	House Price	Index	Monthly Change %	Annual Change %
March 2008	£231,153	235.3	-0.3	5.2
September	£217,542	221.5	-1.6	-5.1
October	£213,599	217.5	-1.8	-7.3
November	£208,962	212.7	-2.2	-9.2
December	£205,530	209.3	-1.6	-10.8
January 2009	£203,482	207.2	-1.0	-11.9
February	£201,941	205.6	-0.8	-12.9
March	£200,086	203.7	-0.9	-13.4

PRESS CONTACTS:

Peter Williams
David Thorpe
John Tindale

020 8390 5872 or 07718 120858
020 8392 9082 or 07764 236781

peter.williams@acadameetrics.co.uk
david.thorpe@acadameetrics.co.uk
john.tindale@acadameetrics.co.uk

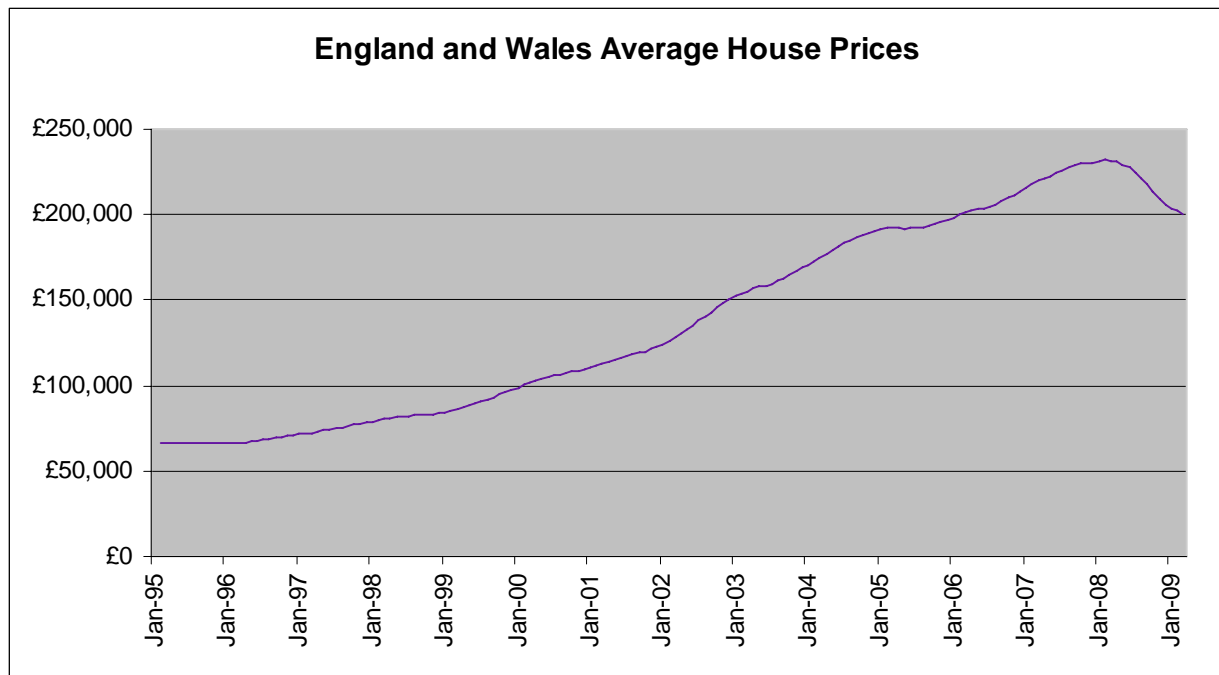
FURTHER COMMENTARY BY DR. PETER WILLIAMS

Dr Peter Williams, Chairman of Acadametrics, comments,

“The average price of a home in England & Wales at £200,086 is down nearly £32,000 (£31,738) since its peak in February 2008 at £231,824.

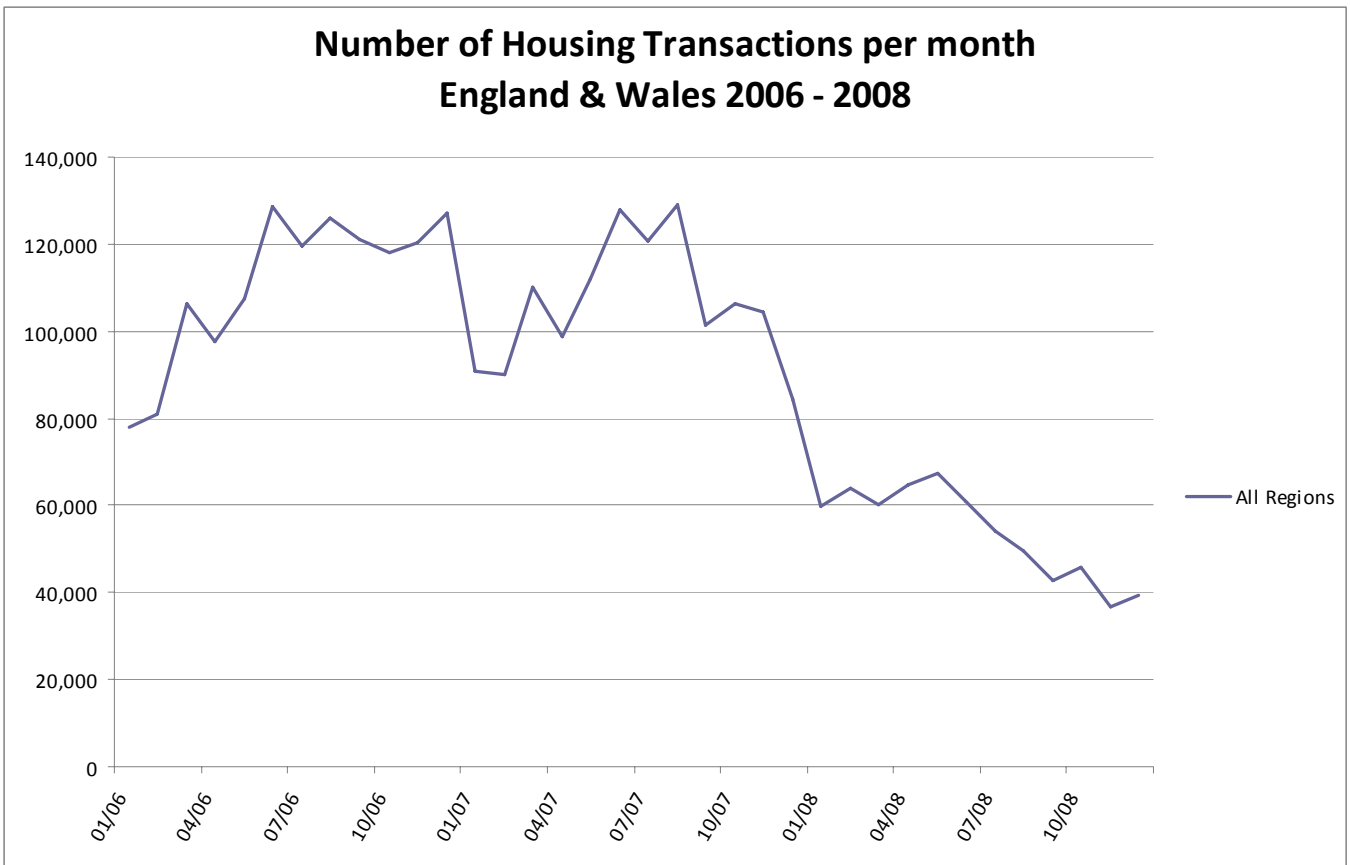
“Prices in all regions in England continue to decline on both a monthly and an annual basis, with the South East now leading the way with an annual fall of -14.9%. Wales fares a little better with a zero monthly growth, while the North, East Midlands, South West and South East are all recording falls of 1% or more in the month.

“Much has been made of the latest mortgage approvals figures, up by 19%, the Nationwide’s 0.9% increase in price and the slightly more positive returns from lenders regarding credit conditions over the next three months. However it is important not to lose sight of the low base against which this increase in approvals is measured, and to recall that Halifax reported a 2% increase in January but a -1.9% fall in March.



“The monthly house price data are still volatile, not least because of the much reduced levels of mortgage approvals and completed transactions (see Chart 2). Quite simply one swallow does not make a summer and the balanced view is that the evidence is mixed at present but slightly less negative. But if the recession can be managed down in terms of impact and the supply of mortgage finance increased, then there is a real prospect of the housing market contraction at least bottoming out in 2009.”

Chart 2

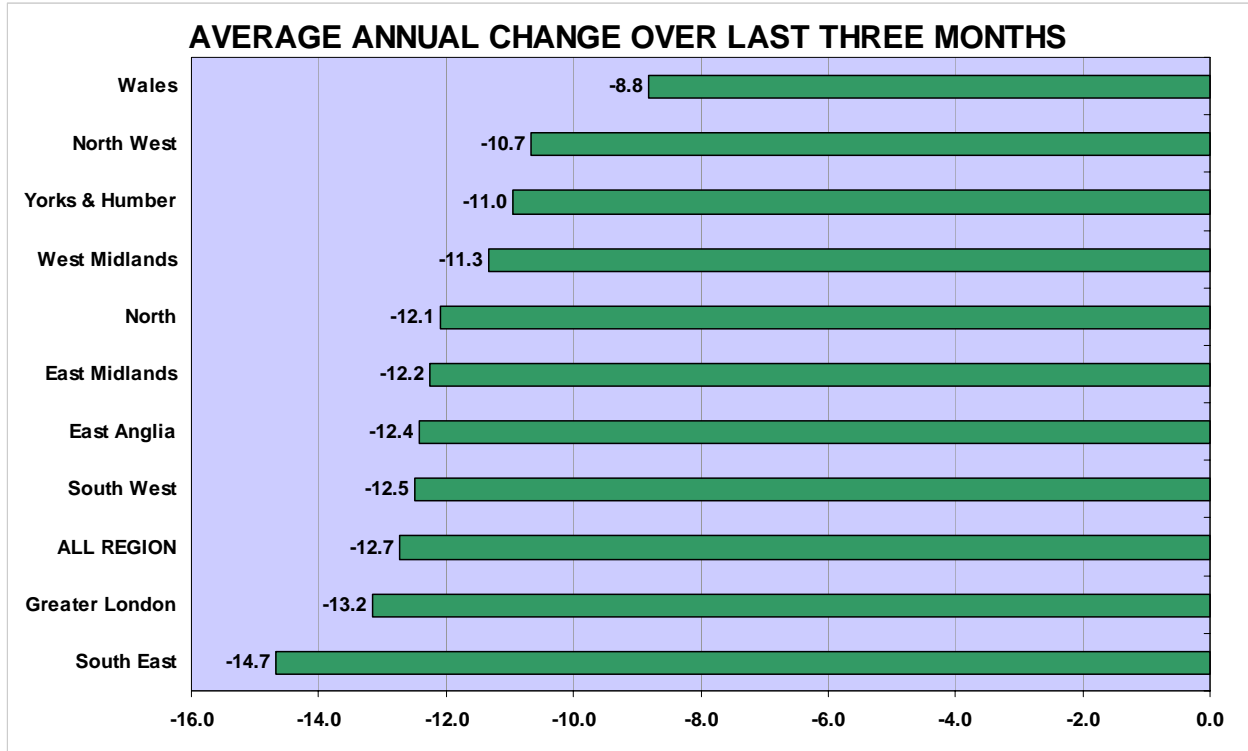


NOTES

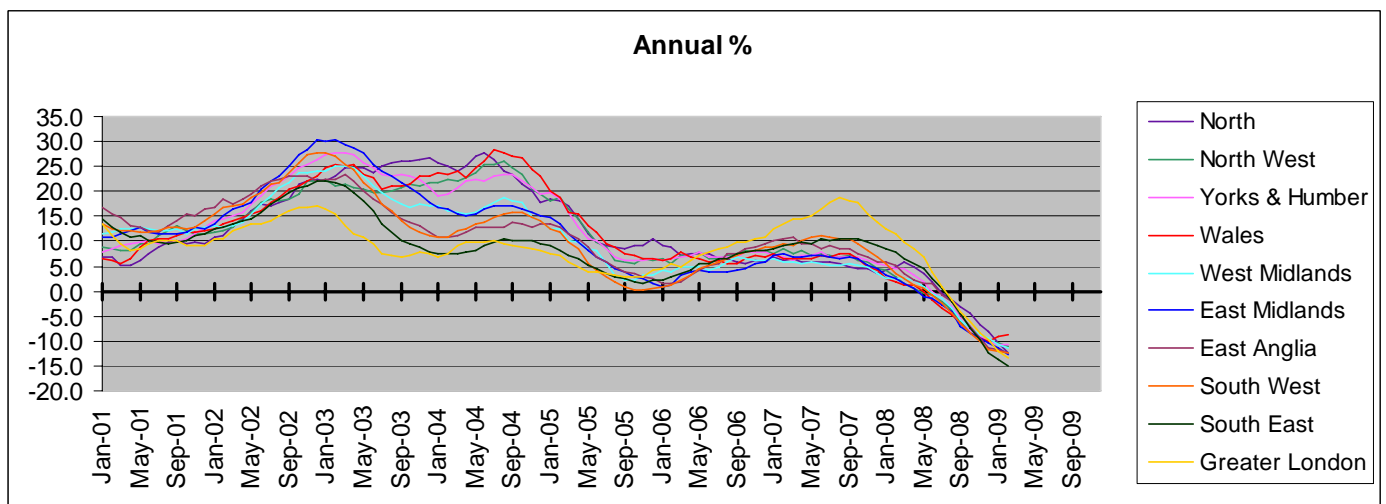
1. FTHPI is the only house price index to use:
 - the **actual** prices at which every property in England and Wales was transacted, including prices for properties bought with cash, using the factual Land Registry data as opposed to valuation estimates or asking prices
 - the price of **every** single relevant transaction, as opposed to prices based upon samples
2. FTHPI is a price series as opposed to a value series.
3. the current month FTHPI comprises a forecast of the LR outcome, using an academic “index of indices” model, pending release of sufficient real data from the Land Registry.
4. FTHPI forecasts are progressively replaced with real data, until every transaction reported to the Land Registry has been recorded and we have provided our FTHPI “ultimate” data.
5. the accuracy of our forecasts is shown monthly on our website www.acadameetrics.co.uk in our “[Development of Forecasts](#)” and in our “[Comparison of Indices](#)”, which shows how each index, including the FTHPI “forecast” , compares with the FTHPI, once sufficient factual Land Registry data have replaced forecast data, to enable FTHPI to approach the “ultimate” results.
6. our website enables comparisons of selected indices over selected timescales to be undertaken [here](#) with ease and provides historic results and other information
7. Acadametrics is an independent privately owned consultancy working with Dr Stephen Satchell, The Reader in Financial Econometrics at the University of Cambridge, and specialises in the assessment of risk in property and mortgage portfolios.
8. Acadametrics Transacted House Prices ([sample here](#)), which exclude any forecast element, underlie the FTHPI data and are available upon subscription for organisations needing the factual month by month Land Registry prices, at county/London borough level by property type, for e.g. property portfolio valuation, planning and advisory purposes

REGIONAL ANALYSIS

All regions continue to record negative growth in nominal terms as measured by the FTHPI 3 month average. The South East has witnessed the sharpest annual fall at -14.7% followed by London at -13.2%.



ANNUAL CHANGE BY REGION

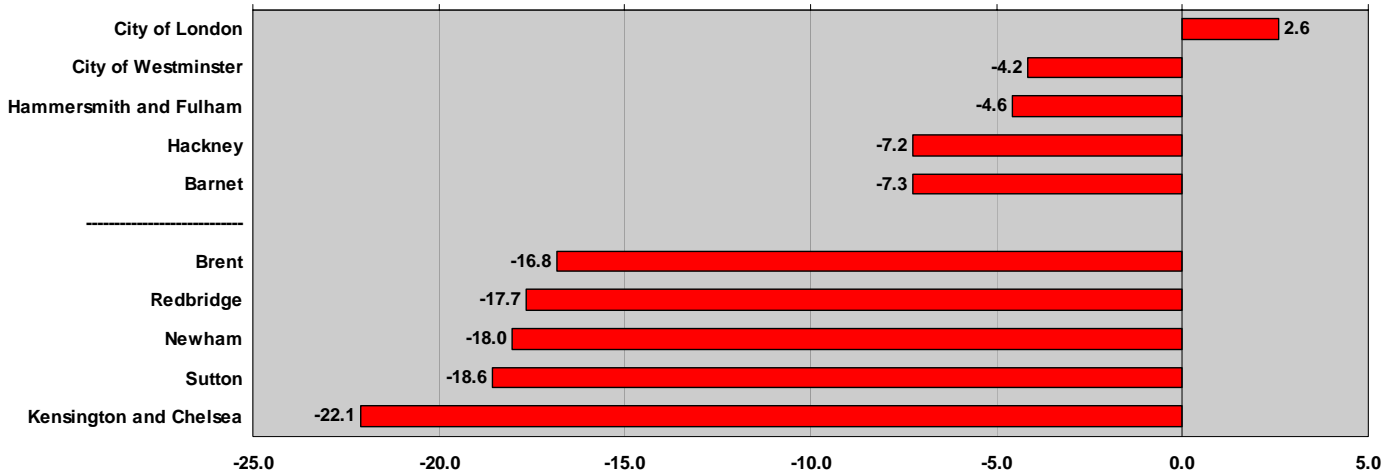


Note that individual regions can be compared using our "National and Regional series from 1995 with Interactive Charts", linked from page 3 NOTE 5 above and from our covering email, and timescales can be varied for clarity. Numerous other comparisons are facilitated in this and other interactive charts available through the same links.

LONDON BOROUGH ANALYSIS

The average annual change recorded over the last three months in the London borough data shows continued decline. Of the thirty three London boroughs, only the City of London recorded an increase, of 2.6%, though we would caution that trends in this borough are notably volatile given the limited number of homes there. All the other boroughs showed declines ranging from -22.1% in Kensington and Chelsea to -4.2% in the City of Westminster.

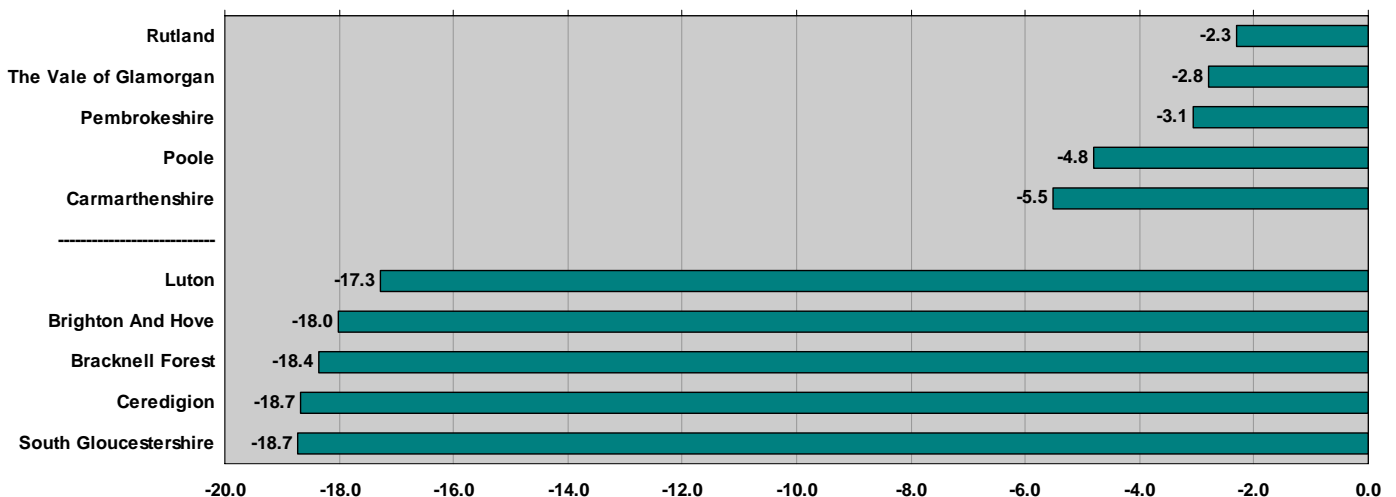
AVERAGE ANNUAL CHANGE OVER LAST THREE MONTHS - LONDON BOROUGHS



UNITARY DISTRICT AND COUNTIES ANALYSIS

Every single one of the 108 districts and counties in England and Wales saw price reductions. The pattern of decline is now universal. Price falls ranged from -18.7% in Ceredigion in Wales and South Gloucestershire to -2.3% in Rutland.

AVERAGE ANNUAL CHANGE OVER LAST THREE MONTHS - COUNTIES



REGIONAL DATA TABLE

	North			North West			East Midlands			West Midlands		
	Av HP	%monthly	%annual	Av HP	%monthly	%annual	Av HP	%monthly	%annual	Av HP	%monthly	%annual
Mar-08	£160,579	1.1	5.7	£166,920	-0.9	1.5	£175,125	-0.9	1.4	£185,956	0.3	2.5
Apr-08	£158,962	-1.0	4.8	£166,500	-0.3	0.7	£174,255	-0.5	0.6	£185,787	-0.1	2.2
May-08	£157,527	-0.9	3.6	£164,669	-1.1	-0.4	£172,064	-1.3	-1.2	£184,048	-0.9	0.8
Jun-08	£155,456	-1.3	1.7	£163,945	-0.4	-0.9	£172,455	0.2	-1.3	£182,129	-1.0	-0.6
Jul-08	£151,632	-2.5	-0.5	£162,294	-1.0	-2.2	£170,361	-1.2	-2.7	£179,669	-1.4	-1.6
Aug-08	£149,305	-1.5	-1.9	£160,256	-1.3	-3.8	£167,701	-1.6	-4.2	£177,620	-1.1	-3.6
Sep-08	£147,752	-1.0	-2.9	£157,887	-1.5	-6.2	£164,406	-2.0	-7.1	£174,954	-1.5	-5.6
Oct-08	£146,742	-0.7	-4.3	£154,414	-2.2	-8.4	£162,209	-1.3	-8.5	£172,507	-1.4	-7.4
Nov-08	£144,318	-1.7	-6.8	£152,766	-1.1	-9.3	£160,299	-1.2	-9.3	£169,404	-1.8	-8.8
Dec-08	£142,071	-1.6	-8.0	£150,900	-1.2	-10.2	£157,545	-1.7	-10.4	£167,104	-1.4	-9.5
Jan-09	£140,962	-0.8	-10.3	£150,841	0.0	-10.2	£155,788	-1.1	-11.4	£165,226	-1.1	-10.6
Feb-09	£139,447	-1.1	-12.2	£149,809	-0.7	-11.1	£154,197	-1.0	-12.7	£164,527	-0.4	-11.2

	Wales			Yorks & Humber			South West			East Anglia		
	Av HP	%monthly	%annual	Av HP	%monthly	%annual	Av HP	%monthly	%annual	Av HP	%monthly	%annual
Mar-08	£166,404	-0.1	1.3	£170,102	0.1	4.4	£233,904	-0.4	2.6	£211,627	-0.1	3.7
Apr-08	£165,874	-0.3	1.1	£169,738	-0.2	3.1	£235,206	0.6	1.4	£209,750	-0.9	2.1
May-08	£163,427	-1.5	-0.2	£168,154	-0.9	1.8	£235,514	0.1	0.6	£209,043	-0.3	1.5
Jun-08	£161,864	-1.0	-1.9	£165,606	-1.5	0.0	£232,995	-1.1	-0.9	£207,835	-0.6	1.5
Jul-08	£160,042	-1.1	-3.6	£162,534	-1.9	-1.3	£229,302	-1.6	-2.5	£204,872	-1.4	-0.7
Aug-08	£159,969	0.0	-4.7	£160,834	-1.0	-3.1	£225,675	-1.6	-4.3	£203,610	-0.6	-2.2
Sep-08	£158,050	-1.2	-6.4	£158,828	-1.2	-5.4	£221,821	-1.7	-6.6	£199,690	-1.9	-4.8
Oct-08	£155,992	-1.3	-8.4	£157,271	-1.0	-7.6	£218,456	-1.5	-8.6	£195,898	-1.9	-6.9
Nov-08	£153,506	-1.6	-9.4	£155,021	-1.4	-9.1	£214,366	-1.9	-10.0	£188,821	-3.6	-9.5
Dec-08	£152,104	-0.9	-9.9	£153,654	-0.9	-10.0	£210,913	-1.6	-11.7	£185,903	-1.5	-11.2
Jan-09	£151,938	-0.1	-9.0	£152,281	-0.9	-10.6	£207,791	-1.5	-12.0	£185,595	-0.2	-11.7
Feb-09	£151,955	0.0	-8.8	£151,862	-0.3	-10.7	£205,596	-1.1	-12.5	£185,426	-0.1	-12.5

	South East			Greater London			ALL REGION		
	Av HP	%monthly	%annual	Av HP	%monthly	%annual	Av HP	%monthly	%annual
Mar-08	£276,714	-0.3	6.5	£374,522	-0.4	9.9	£231,153	-0.3	5.2
Apr-08	£276,297	-0.2	5.4	£373,975	-0.1	8.5	£230,753	-0.2	4.1
May-08	£275,122	-0.4	4.5	£372,401	-0.4	6.7	£229,377	-0.6	2.9
Jun-08	£272,798	-0.8	2.5	£369,847	-0.7	3.9	£227,534	-0.8	1.2
Jul-08	£268,554	-1.6	0.7	£364,879	-1.3	0.9	£224,203	-1.5	-0.6
Aug-08	£263,606	-1.8	-2.2	£360,812	-1.1	-1.6	£221,146	-1.4	-2.8
Sep-08	£259,210	-1.7	-4.4	£354,402	-1.8	-4.0	£217,542	-1.6	-5.1
Oct-08	£252,999	-2.4	-7.4	£347,828	-1.9	-6.1	£213,599	-1.8	-7.3
Nov-08	£246,591	-2.5	-9.8	£337,899	-2.9	-8.3	£208,962	-2.2	-9.2
Dec-08	£240,870	-2.3	-12.3	£333,096	-1.4	-9.9	£205,530	-1.6	-10.8
Jan-09	£238,598	-0.9	-13.5	£328,081	-1.5	-12.0	£203,482	-1.0	-11.9
Feb-09	£236,273	-1.0	-14.9	£325,609	-0.8	-13.4	£201,941	-0.8	-12.9
Mar-09							£200,086	-0.9	-13.4

also see www.ft.com/houseprices

www.acadmetrics.co.uk

FOOTNOTES ON DATA AND METHODOLOGY

1. FTHPI is derived from Land Registry (LR) house price data, seasonally and mix adjusted by property type. The prices are smoothed to show underlying trends. FTHPI includes cash purchase prices and is the only index based upon the **complete, factual**, house price data for England and Wales, as opposed to a sample.
2. most indices employ data available to the provider as result of its business; index methodologies are designed to exploit the advantages and overcome the disadvantages of each particular dataset; a valuation series (whether the values are professionally estimated at e.g. time of mortgage offer or by an estate agent) is not the same as a price series; price series (FTHPI, CLG and LR) can be prepared only when the prices at which properties have been transacted have been recorded at LR (FTHPI and LR) or when firm prices at mortgage completion (CLG) have been made available by lenders; valuation series can be prepared whenever the data e.g. asking or mortgage offer prices are available to the provider; publicity accrues to those indices which are released first; indices published at or before month end are likely to employ data for the current and prior months. LR overcomes the delay in availability of full LR transaction data by using only the prices of properties for which two prices are recorded at LR and the published American Case Shiller methodology, developed to prepare indices for metropolitan districts, since the USA lacks a central Land Registry. FTHPI overcomes the above delay with an "index of indices" forecasting model, purpose developed by Dr Stephen Satchell The Reader in Financial Econometrics at the University of Cambridge and Dr George Christodoulakis, then at the Sir John Cass Business School; of the price series, FTHPI, LR and CLG are published in that order.
3. FTHPI provides prices at national and regional level to 1995 and, at county/London borough level, to 2000; back-cast national prices for graphing are available to 1987.
4. at **national** level, only some 40,000 monthly transactions now occur compared with at least 100,000 in past markets. For any given month, c.15% (6,000) of these will be reported to LR by month end. When monthly sales were c.100,000, we found that using the initial 15,000 transactions then reported to LR, introduced volatility into our first FTHPI result. Rather than rely upon a small sample, likely to be unrepresentative, FTHPI therefore employs the above "index of indices", and a series of auto regression and averaging, models. After the elapse of one month, LR provides c.70% of the transactions for the prior month, used to replace the initial FTHPI "forecast" with a first FTHPI "update" result. A further month later, LR provides c.90% of transactions, used to replace the first, with a second, FTHPI "update" result. Three months after any given month, LR provides c.95 % of the month's transactions, sufficient to enable us to describe our next update as an FTHPI "final" index, closely approximating the FTHPI "ultimate" results; FTHPI "ultimate" includes the price of virtually every single LR transaction for the month, smoothed, seasonally and mix adjusted; the first FTHPI "update" now uses c.28,000 real transactions for the month (as well as, by smoothing, c.36,000 transactions for the prior month); only CLG with say 16,000 mortgage completion prices (and the Rightmove asking price index) have specified comparable data volumes; lender index data volumes are not quantified; the Halifax HPI employs three month smoothing for annual change results but not for other results; Hometrack provides survey data and specifies that theirs is a survey, not an index; current results are showing a divide between indices with more, and indices with less, data volumes.
5. in each of the 10 **regions**, an average of only some 4,000 transactions now occur monthly; hence, we wait one month, pending receipt from LR of the c.70% sample and provide monthly results one month in arrears of the most recent month. In the page 6 Regional data table, **red** data represent FTHPI "forecast" results, **blue** data represent FTHPI "update" results and black data represent the FTHPI "final" index.
6. at **county and London borough** levels, c.40,000 national monthly transactions, spread over 10 regions and 108 counties and 33 London boroughs, provide an average of only c.283 house prices monthly within each sub-district. Even delayed one and smoothed over three months, FTHPI is indicative until we are able to publish the FTHPI "final" index using the LR 95% sample. FTHPI data are calculated on a consistent basis from county and London borough through to region and ultimately to national level; at every level, the current month price represents the average of the prices for the current month and for the prior and subsequent months ("three month, centre month smoothed"). LR employs a "four month, end month smoothed", process for county/London borough data, but not for national and regional results.
7. **data limitations** are not confined to volumes. FTHPI and the LR index are unable to distinguish between 3, 4 or 5 bedroom houses or between those with 2, 1 or even no bathroom; the lender hedonic indices and the CLG mix adjusted index do so. LR data exclude commercial and, thus, auction sales and do not reflect repossession prices on the grounds that such prices do not reflect those between a willing buyer and a willing seller; some feel that auction prices represent true market prices; others believe that the repossession price of a recent new build flat in Manchester is not (at least not yet) reflected in the price of a flat in an upmarket area.
8. FTHPI is prepared from Land Registry data using a methodology designed to provide a "true measure of house price inflation"; Acadametrics does not guarantee the accuracy of the FTHPI results and neither the Financial Times nor Acadametrics shall be liable for any loss or damage, whatsoever, consequential upon any error, incorrect description of or inadequacy in the data; persons using the data do so entirely at their own risk; FTHPI is freely provided for publication with due attribution to Acadametrics. Permission is required for any commercial use of the data.
9. The monthly, smoothed, average Land Registry prices at regional, county and London borough level by property type, which underlie FTHPI, together with historic data are available from Acadametrics as in page 3 NOTE 7 above.
information@acadametrics.co.uk